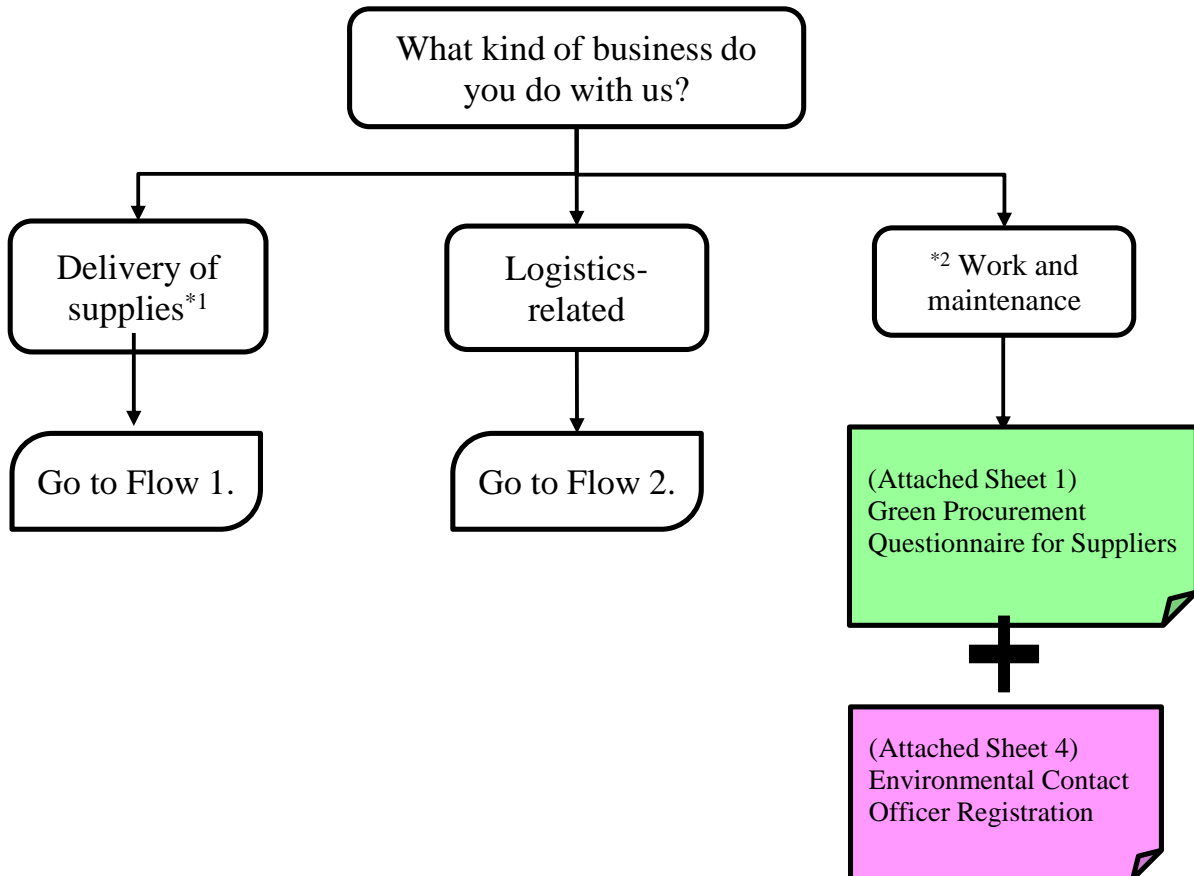


# Attachment 1) Form Submission Check Flow

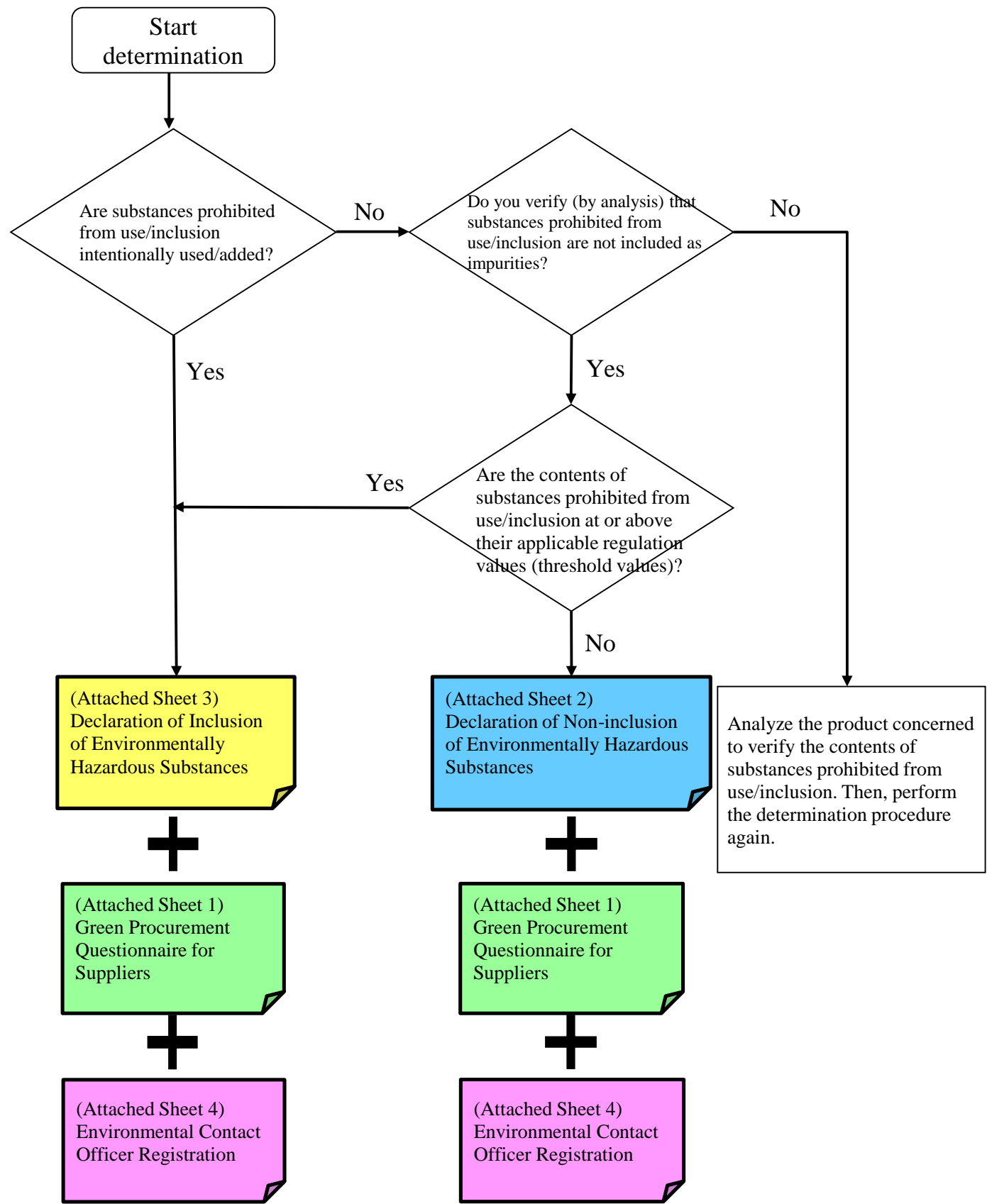
Documents to be submitted to us differ depending on your business with us. Please check them according to the flow for the kind of your business with us, as shown below:



\*1 Supplies: This term refers to purchased products (including outsourced processed items), main materials, indirect materials, and packing/packaging materials.

\*2 If neither the delivery of supplies nor logistics-related is the case, Suppliers shall follow the flow for work and maintenance.

Flow 1



Flow 2

